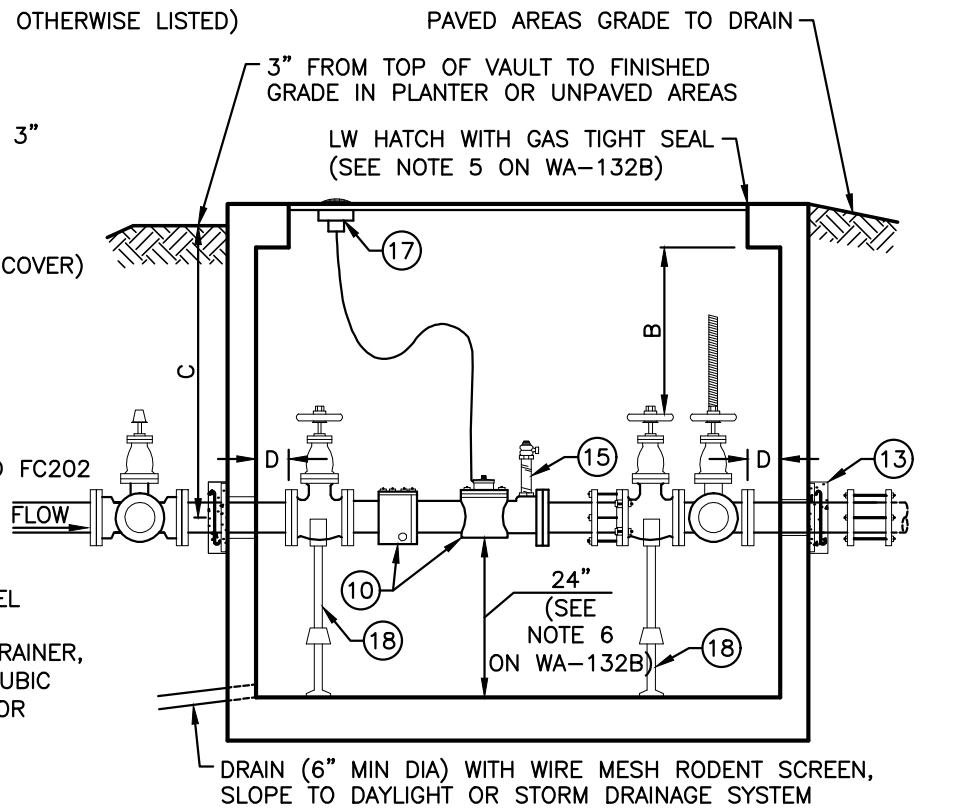


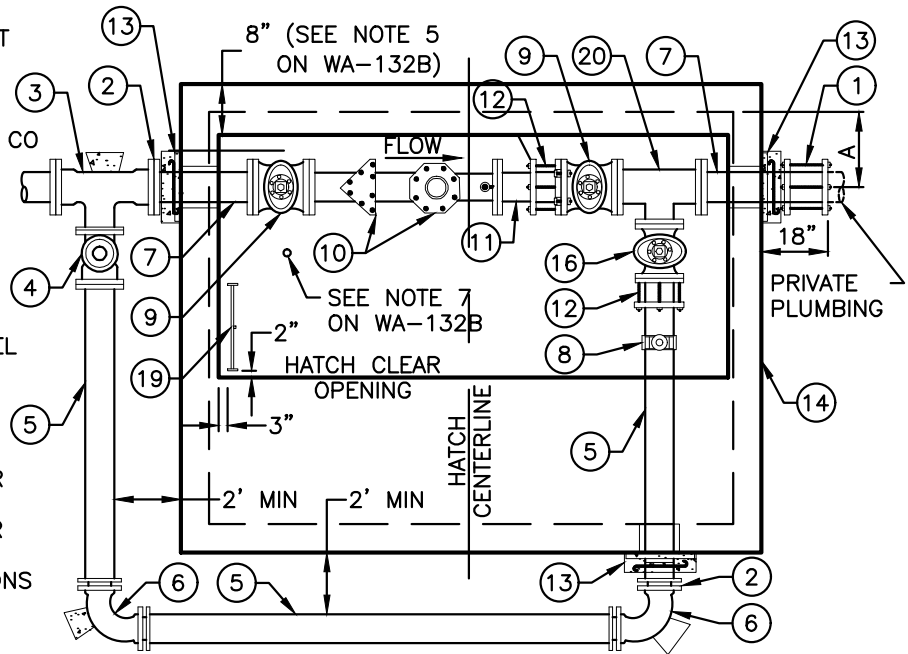
MATERIAL LIST

(ALL SIZES ARE SAME AS METER UNLESS OTHERWISE LISTED)

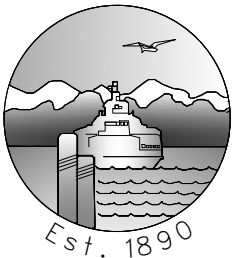
- ① 1-MECHANICAL LONG BODY CPLG
- ② 2-4"x3" REDUCER, MJ & 3' SPOOL FOR 3" SERVICE ONLY
- ③ 1-TEE, MJxFL
- ④ 1-GATE VALVE, FLxMJ (W/VALVE BOX & COVER)
- ⑤ 3-DI PIPE, PE, LENGTH TO FIT
- ⑥ 2-90° BEND, MJ
- ⑦ 2-DI PIPE, PExFL LENGTH TO FIT
- ⑧ 1-EPOXY COATED SERVICE SADDLE, FORD FC202 (TAP POINTED UP AT 12-0'CLOCK) OR EQUAL, 1-CORP STOP, MIPT, FORD FB500-7 OR APPROVED EQUAL
- ⑨ 2-RW GATE VALVES, FL WITH HAND WHEEL
- ⑩ SENSUS OMNI C2 METER W/INTERNAL STRAINER, W/ELECTRONIC RESOLUTION (100'S OF CUBIC FEET FOR 3" METER, 500 CUBIC FEET FOR 4-6" METER)
- ⑪ 1-DI ADAPTER FL.xPE, LENGTH TO FIT
- ⑫ 2-FLANGED COUPLING ADAPTER, EQUAL TO ROMAC FCG
- ⑬ MEGA-LUG MID-SPAN RESTRAINT AND THRUST BLOCK & VAULT SEAL. SEE COE STD DTL WA-111
- ⑭ PRECAST CONCRETE VAULT BY UTILITY VAULT CO (SEE TABLE FOR MODEL #) W/TWO DIAMOND PLATE DOORS RATED FOR HS-30 LOADING
- ⑮ 1-FORD MIPT BALL CORP WITH THREADED END CAP SIZED TO FIT OMNI C2 TESTPORT SEE TABLE**
- ⑯ 1-OS & Y GATE VALVE, FL WITH HAND WHEEL
- ⑰ TR/PL SENSOR (TO MOUNT IN VAULT ACCESS DOOR)
- ⑱ 2-ADJUSTABLE STANCHION BOLTED TO FLOOR
- ⑲ LANE INTERNATIONAL POLYPROPYLENE LADDER WITH PULL UP HANDRAIL. CONTRACTOR TO INSTALL PER MANUFACTURER RECOMMENDATIONS AND COORDINATE LOCATION WITH ENGINEER.
- ⑳ 1-TEE, FL



ELEVATION VIEW



PLAN VIEW



CITY OF EDMONDS
PUBLIC WORKS
DEPARTMENT

**3", 4" & 6"
WATER SERVICE
& METER**

APPROVED BY: R. ENGLISH

REVISION DATE
JANUARY 2021

STANDARD
DETAIL

WA-132A